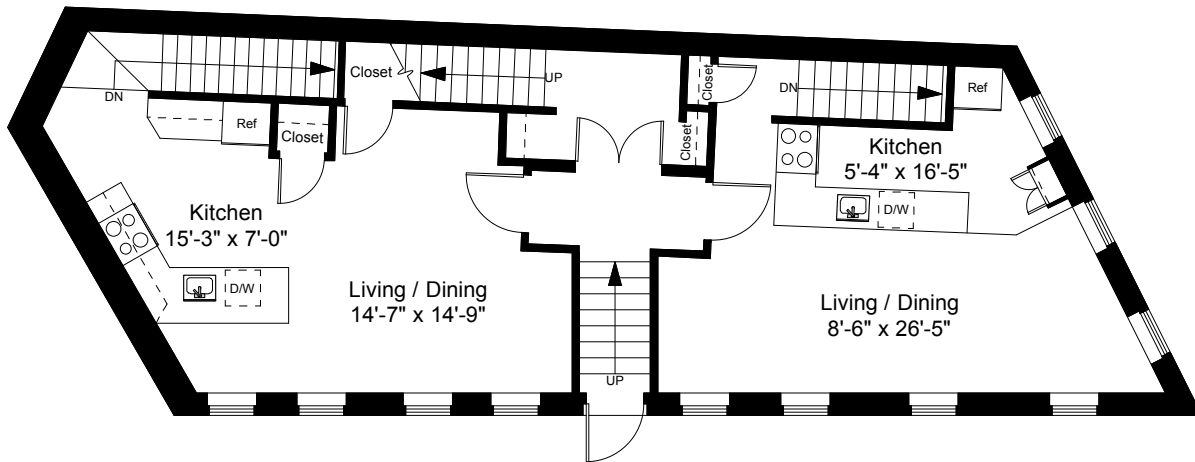
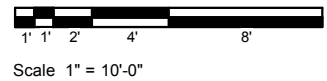


Garden Level Plan
Ceiling Height = 8'-5"

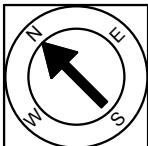


First Floor Plan
Ceiling Height = 8'-6"

93 Charter Street
Boston, MA 02113



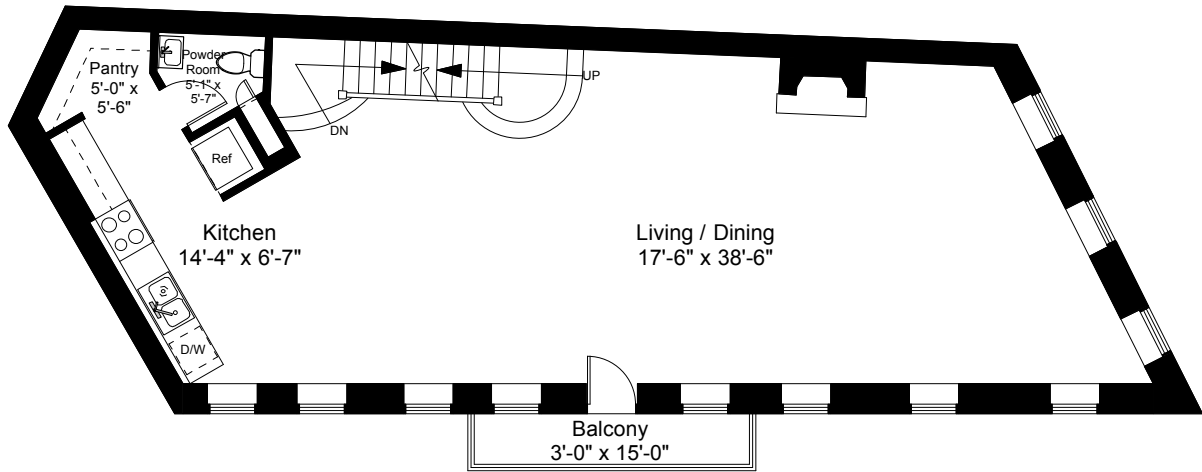
1



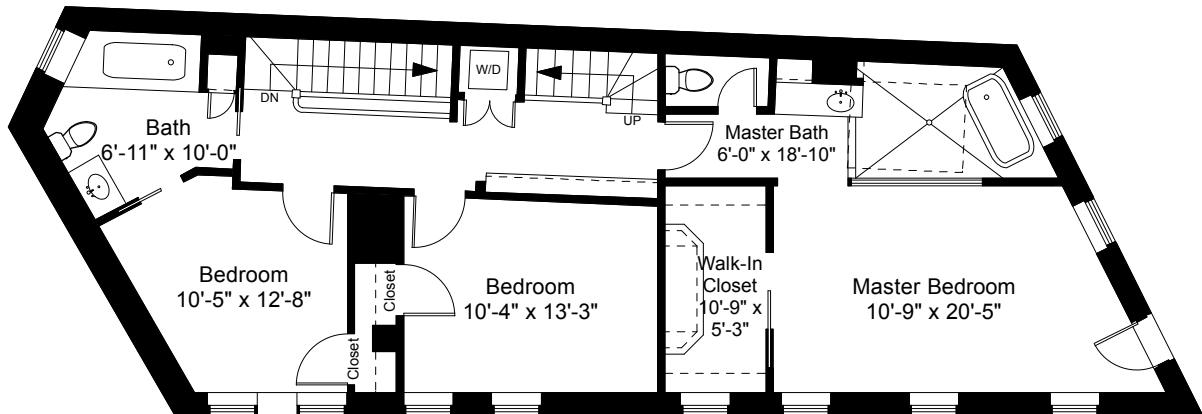
Completed: November 2017

Note: Dimensions are not guaranteed and are provided for informational purposes only. Individual room dimensions are not used to calculate overall square footage.

NATIONAL
—FLOOR PLANS—
& PHOTOGRAPHY
(800) 328-0217

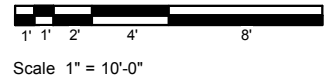


Second Floor Plan
Ceiling Height = 9'-8"

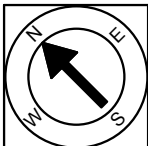


Third Floor Plan
Ceiling Height = 9'-0"

93 Charter Street
Boston, MA 02113



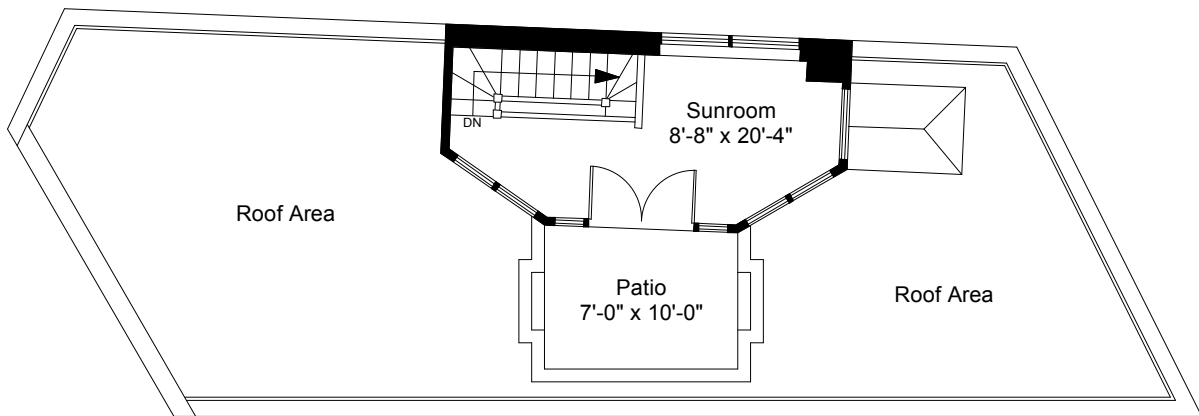
2



Completed: November 2017

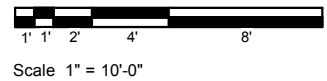
Note: Dimensions are not guaranteed and are provided for informational purposes only. Individual room dimensions are not used to calculate overall square footage.

NATIONAL
—FLOOR PLANS—
& PHOTOGRAPHY
(800) 328-0217

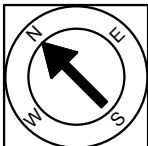


Fourth Floor Plan
 Ceiling Height = 7'-6"

93 Charter Street
 Boston, MA 02113



3



Completed: November 2017

Note: Dimensions are not guaranteed and are provided for informational purposes only. Individual room dimensions are not used to calculate overall square footage.

NATIONAL
 FLOOR PLANS
 & PHOTOGRAPHY
 (800) 328-0217