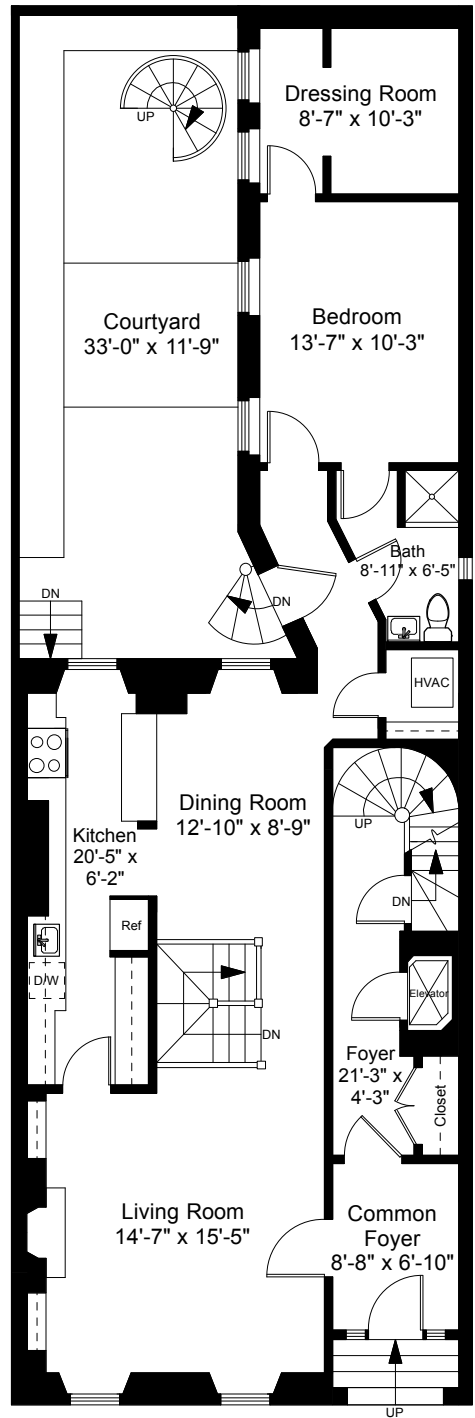
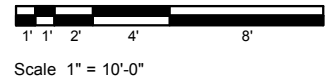


**Garden Level Plan**  
Ceiling Height = 7'-0"

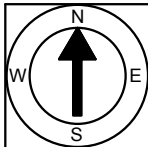


**First Floor Plan**  
Ceiling Height = 9'-5"

85 Pinckney Street  
Boston, MA 02114



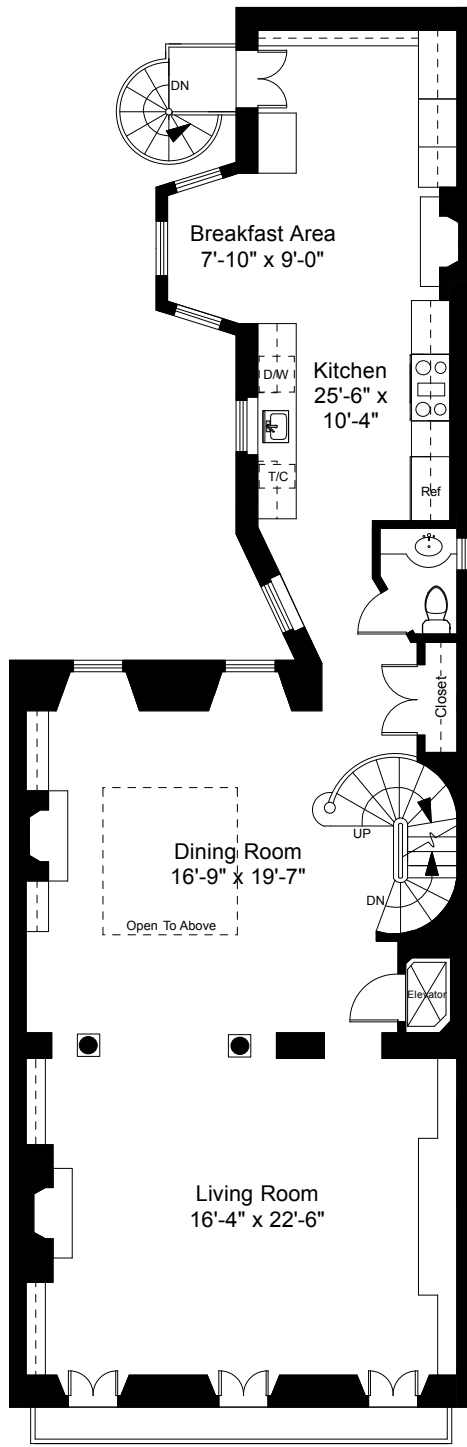
1



Completed: April 2017

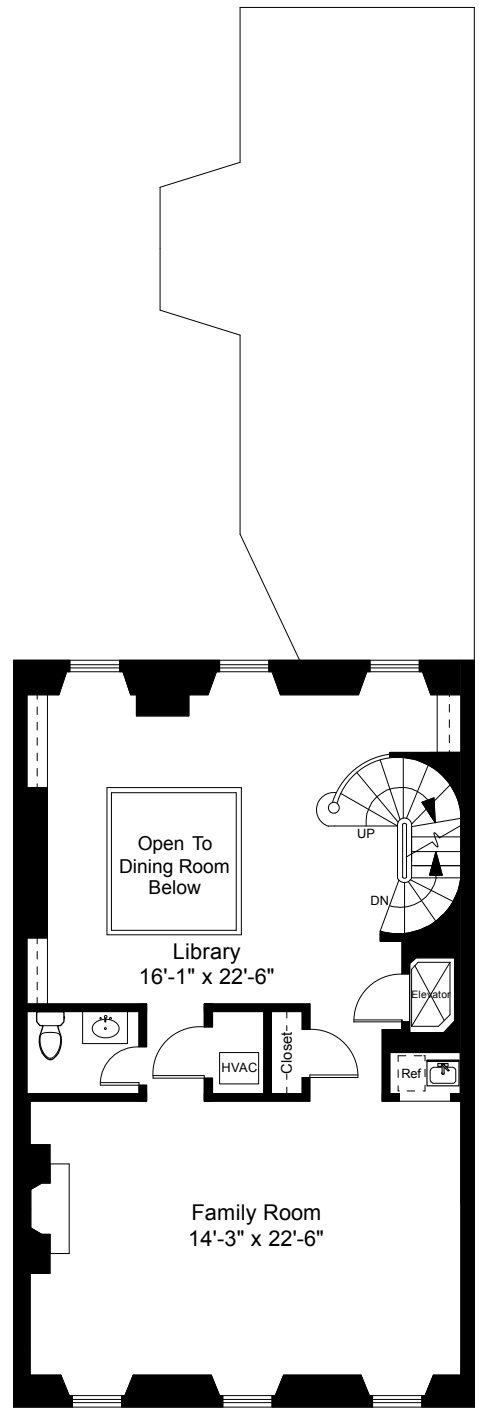
**Note:** Dimensions are not guaranteed and are provided for informational purposes only. Individual room dimensions are not used to calculate overall square footage.

**NATIONAL**  
—FLOOR PLANS—  
& PHOTOGRAPHY  
(800) 328-0217



Second Floor Plan  
Ceiling Height = 10'-9"

85 Pinckney Street  
Boston, MA 02114

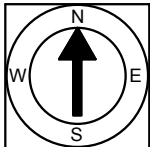


Third Floor Plan  
Ceiling Height = 9'-3"



Scale 1" = 10'-0"

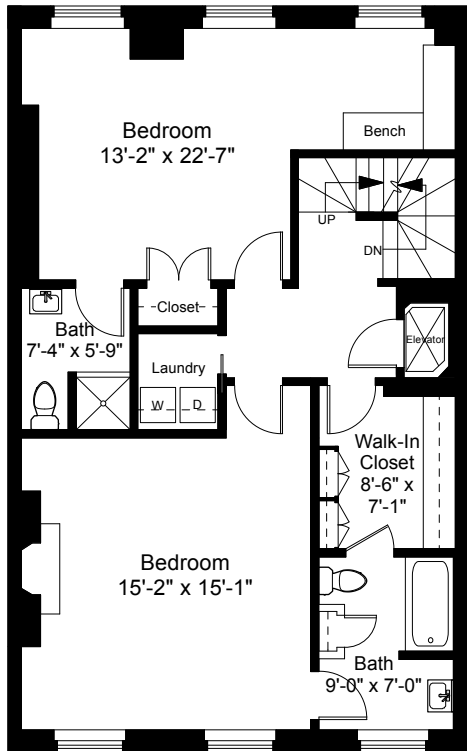
2



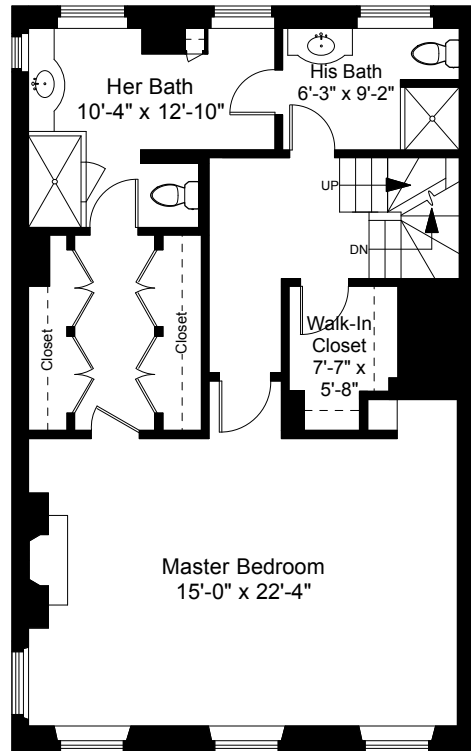
Completed: April 2017

Note: Dimensions are not guaranteed and are provided for informational purposes only. Individual room dimensions are not used to calculate overall square footage.

**NATIONAL**  
—FLOOR PLANS—  
& PHOTOGRAPHY  
(800) 328-0217



Fourth Floor Plan  
Ceiling Height = 7'-10"



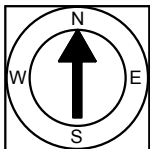
Fifth Floor Plan  
Ceiling Height = 8'-10"

85 Pinckney Street  
Boston, MA 02114



Scale 1" = 10'-0"

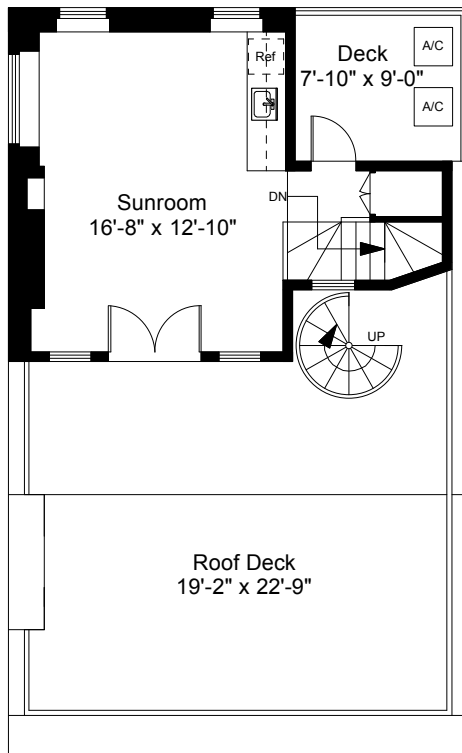
3



Completed: April 2017

Note: Dimensions are not guaranteed and are provided for informational purposes only. Individual room dimensions are not used to calculate overall square footage.

NATIONAL  
—FLOOR PLANS—  
& PHOTOGRAPHY  
(800) 328-0217



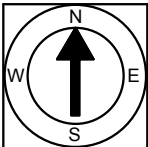
Sixth Floor Plan  
Ceiling Height = 8'-0"

85 Pinckney Street  
Boston, MA 02114



Scale 1" = 10'-0"

4



Completed: April 2017

Note: Dimensions are not guaranteed and are provided for informational purposes only. Individual room dimensions are not used to calculate overall square footage.

NATIONAL  
—FLOOR PLANS—  
& PHOTOGRAPHY  
(800) 328-0217