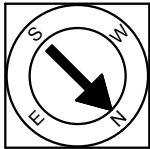


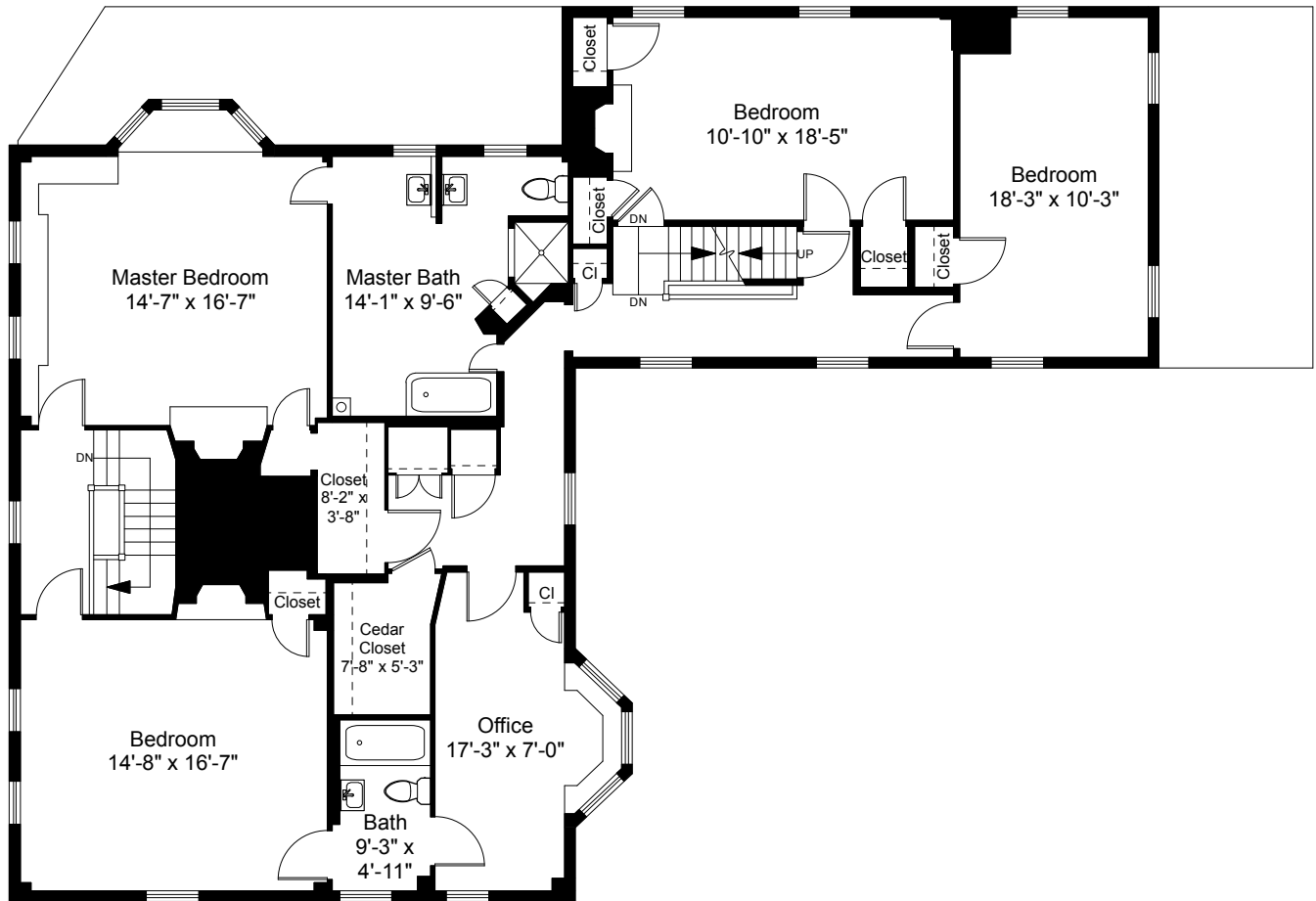
1



Completed: March 2017

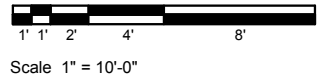
Note: Dimensions are not guaranteed and are provided for informational purposes only. Individual room dimensions are not used to calculate overall square footage.

  
**NATIONAL**  
 FLOOR PLANS  
 & PHOTOGRAPHY  
 (800) 328-0217

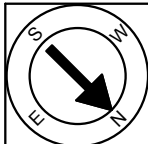


Second Floor Plan  
Ceiling Height = 7'-5"

521 Hammond Street  
Chestnut Hill, MA 02467



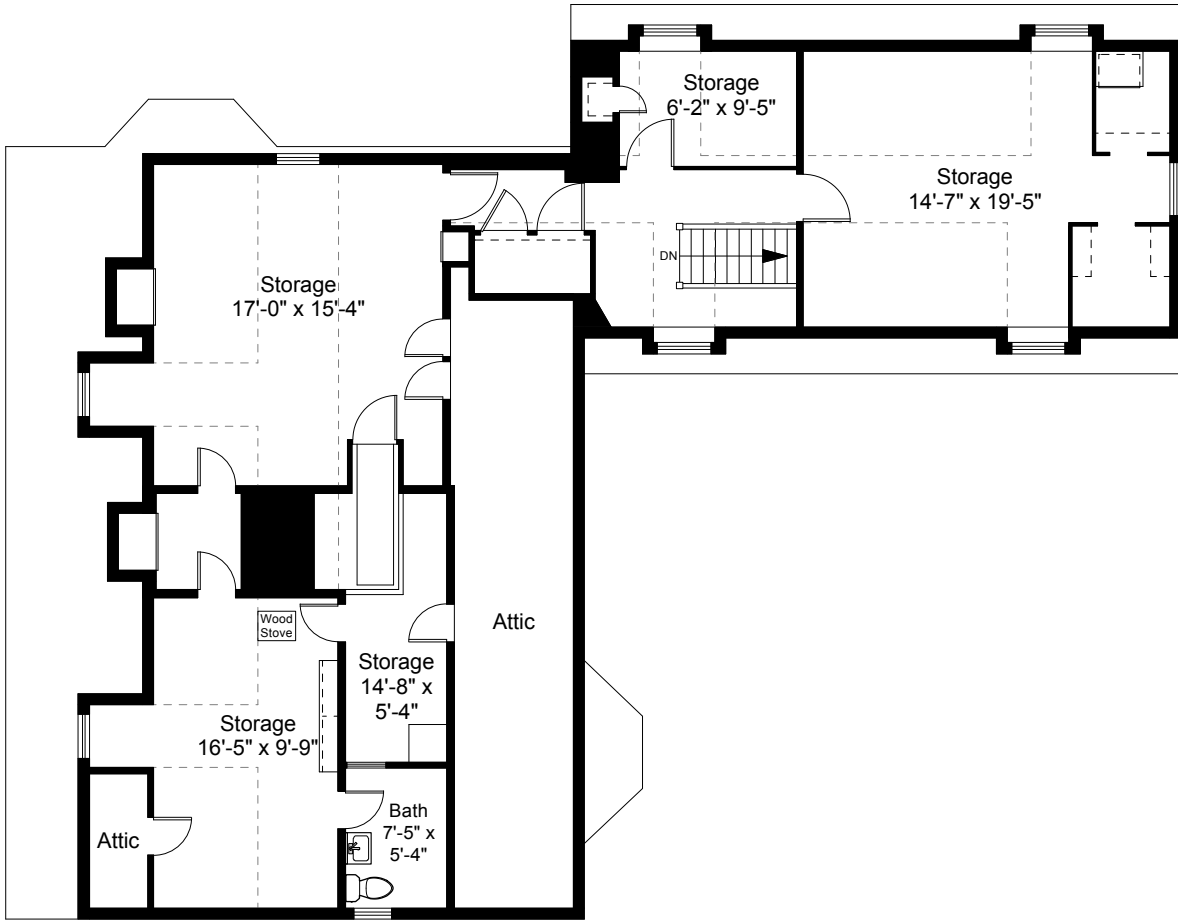
2



Completed: March 2017

Note: Dimensions are not guaranteed and are provided for informational purposes only. Individual room dimensions are not used to calculate overall square footage.

**NATIONAL**  
FLOOR PLANS  
& PHOTOGRAPHY  
(800) 328-0217



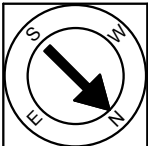
Third Floor Plan  
Ceiling Height = 7'-2"

521 Hammond Street  
Chestnut Hill, MA 02467



Scale 1" = 10'-0"

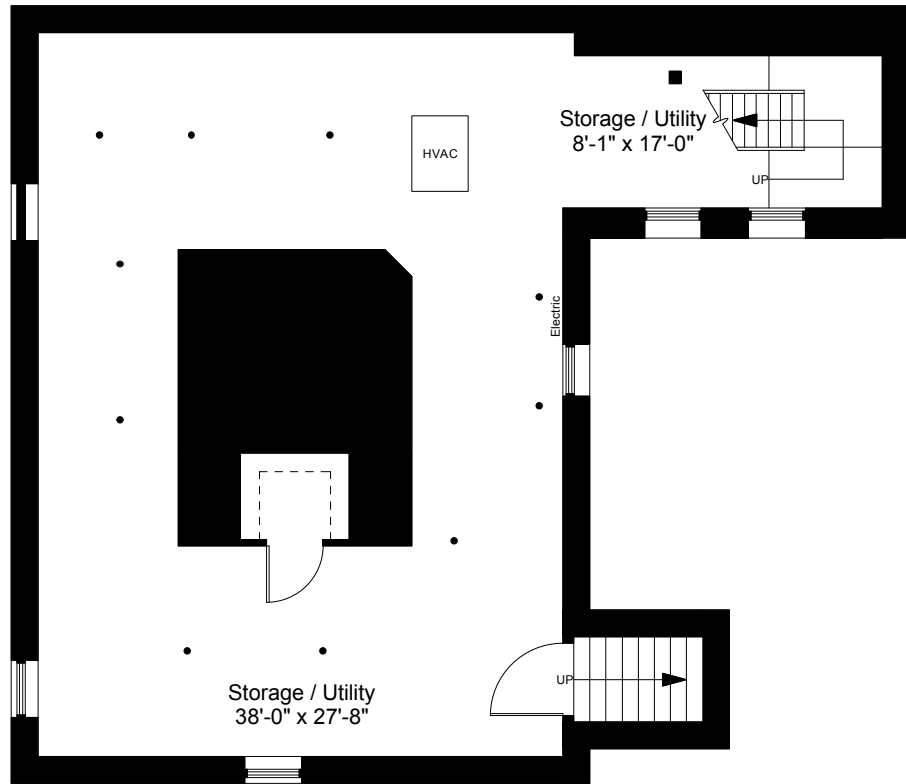
3



Completed: March 2017

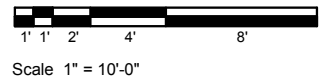
Note: Dimensions are not guaranteed and are provided for informational purposes only. Individual room dimensions are not used to calculate overall square footage.

**NATIONAL**  
FLOOR PLANS  
& PHOTOGRAPHY  
(800) 328-0217

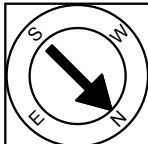


**Basement Plan**  
Ceiling Height = 6'-6"

521 Hammond Street  
Chestnut Hill, MA 02467



4



Completed: March 2017

Note: Dimensions are not guaranteed and are provided for informational purposes only. Individual room dimensions are not used to calculate overall square footage.

**NATIONAL**  
—FLOOR PLANS—  
& PHOTOGRAPHY  
(800) 328-0217