

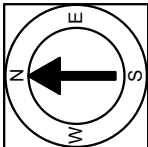
First Floor Plan  
Ceiling Height = 8'-6"

25 Coolidge Hill Road  
Cambridge, MA 02138



Scale 1" = 10'-0"

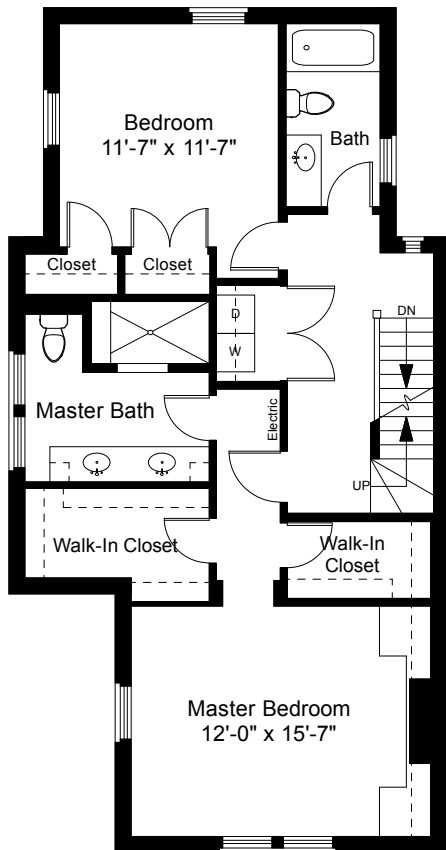
1



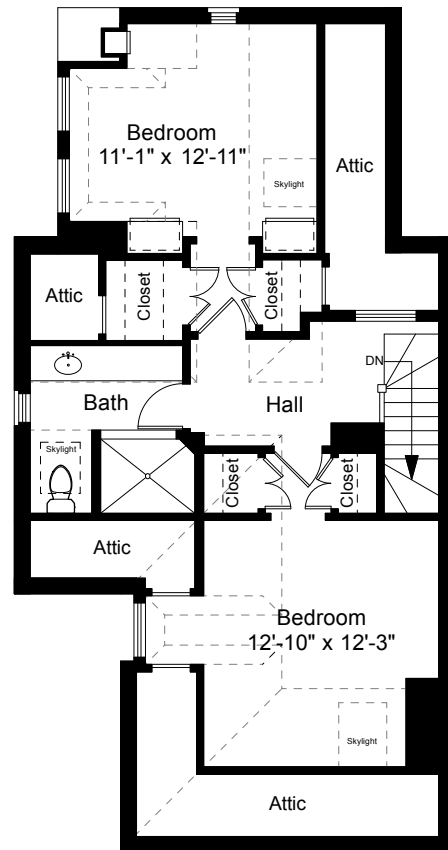
Completed: June 2017

Note: Dimensions are not guaranteed and are provided for informational purposes only. Individual room dimensions are not used to calculate overall square footage.

**NATIONAL**  
FLOOR PLANS  
& PHOTOGRAPHY  
(800) 328-0217



Second Floor Plan  
Ceiling Height = 8'-2"



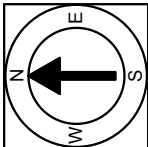
Third Floor Plan  
Ceiling Height = 7'-7"

25 Coolidge Hill Road  
Cambridge, MA 02138



Scale 1" = 10'-0"

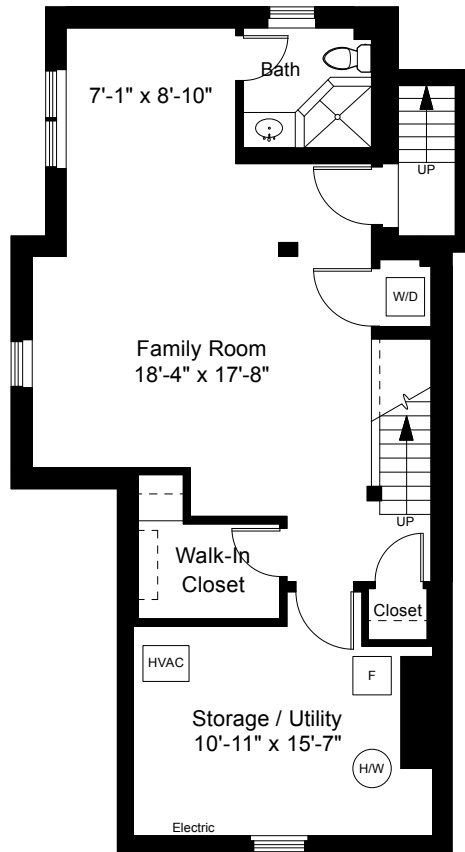
2



Completed: June 2017

Note: Dimensions are not guaranteed and are provided for informational purposes only. Individual room dimensions are not used to calculate overall square footage.

NATIONAL  
FLOOR PLANS  
& PHOTOGRAPHY  
(800) 328-0217



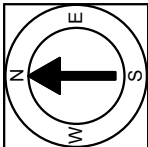
Lower Level Plan  
Ceiling Height = 7'-7"

25 Coolidge Hill Road  
Cambridge, MA 02138



Scale 1" = 10'-0"

3



Completed: June 2017

Note: Dimensions are not guaranteed and are provided for informational purposes only. Individual room dimensions are not used to calculate overall square footage.

NATIONAL  
FLOOR PLANS  
& PHOTOGRAPHY  
(800) 328-0217