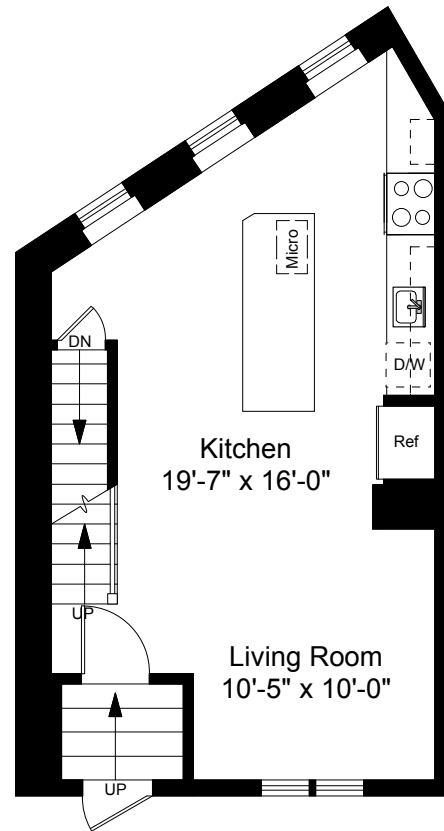


Lower Level Plan
Ceiling Height = 7'-0"



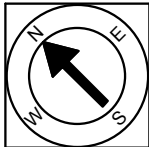
First Floor Plan
Ceiling Height = 8'-11"

184 Tudor Street
South Boston, MA 02127



Scale 1/8" = 1'-0"

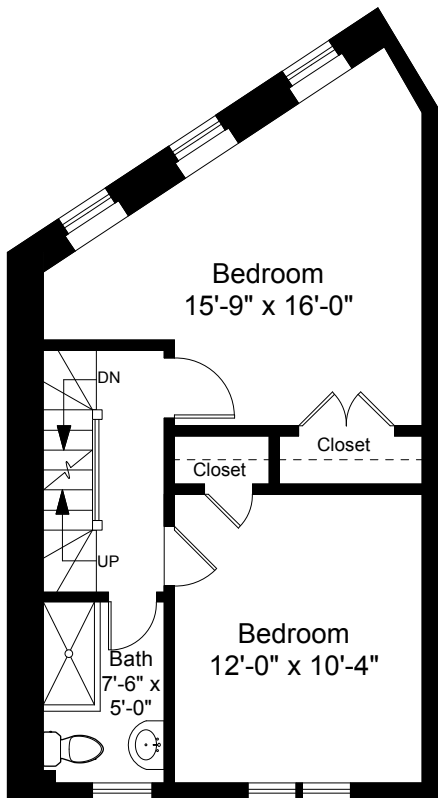
1



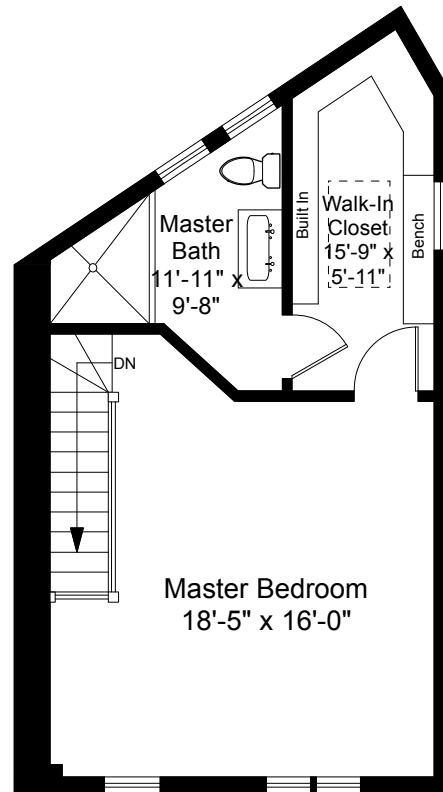
Completed: March 2018

Note: Dimensions are not guaranteed and are provided for informational purposes only. Individual room dimensions are not used to calculate overall square footage.

NATIONAL
FLOOR PLANS
& PHOTOGRAPHY
(800) 328-0217



Second Floor Plan
Ceiling Height = 8'-5"



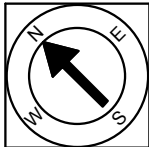
Third Floor Plan
Ceiling Height = 7'-6"

184 Tudor Street
South Boston, MA 02127



Scale 1/8" = 1'-0"

2



Completed: March 2018

Note: Dimensions are not guaranteed and are provided for informational purposes only. Individual room dimensions are not used to calculate overall square footage.

NATIONAL
FLOOR PLANS
& PHOTOGRAPHY
(800) 328-0217