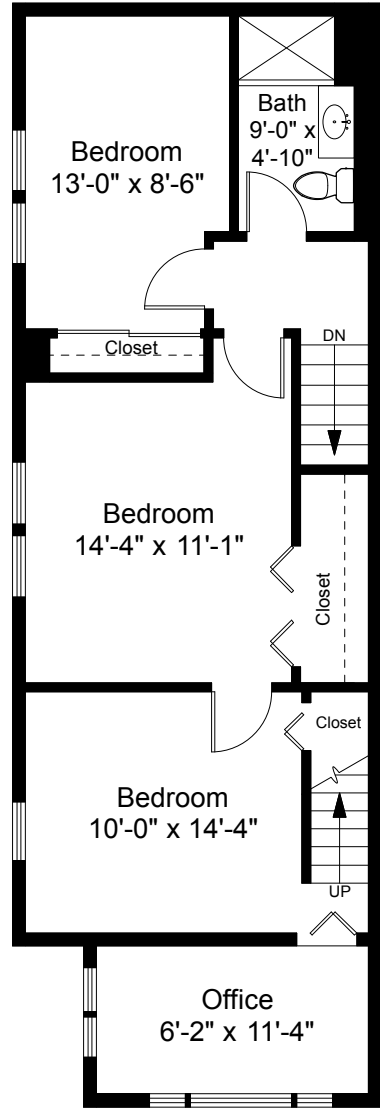


First Floor Plan
Ceiling Height = 7'-7"



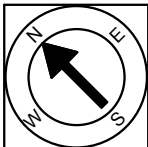
Second Floor Plan
Ceiling Height = 8'-3"

11 Bailey Street
Somerville, MA 02144



Scale 1/8" = 1'-0"

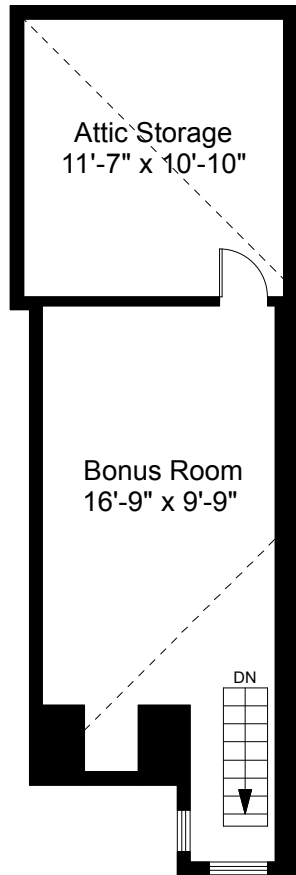
1



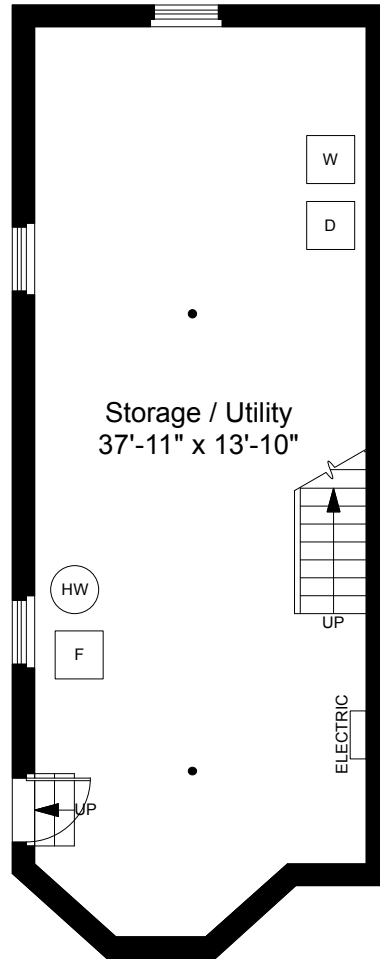
Completed: January 2019

Note: Dimensions are not guaranteed and are provided for informational purposes only. Individual room dimensions are not used to calculate overall square footage.

NATIONAL
FLOOR PLANS
& PHOTOGRAPHY
(800) 328-0217



Third Floor Plan
Ceiling Height = 8'-3"



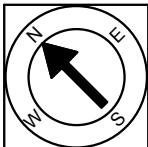
Basement Plan
Ceiling Height = 6'-9"

11 Bailey Street
Somerville, MA 02144



Scale 1/8" = 1'-0"

2



Completed: January 2019

Note: Dimensions are not guaranteed and are provided for informational purposes only. Individual room dimensions are not used to calculate overall square footage.

NATIONAL
—FLOOR PLANS—
& PHOTOGRAPHY
(800) 328-0217