

Scale 1/4" = 1'-0"

New England Floor Plans
 Cumberland, Rhode Island
 Telephone - 800-328-0217
 www.nelfloorplans.com

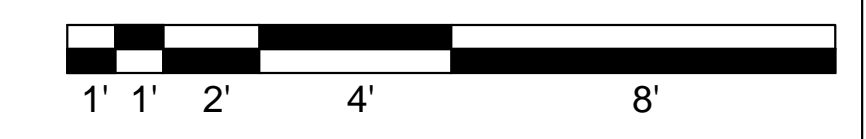
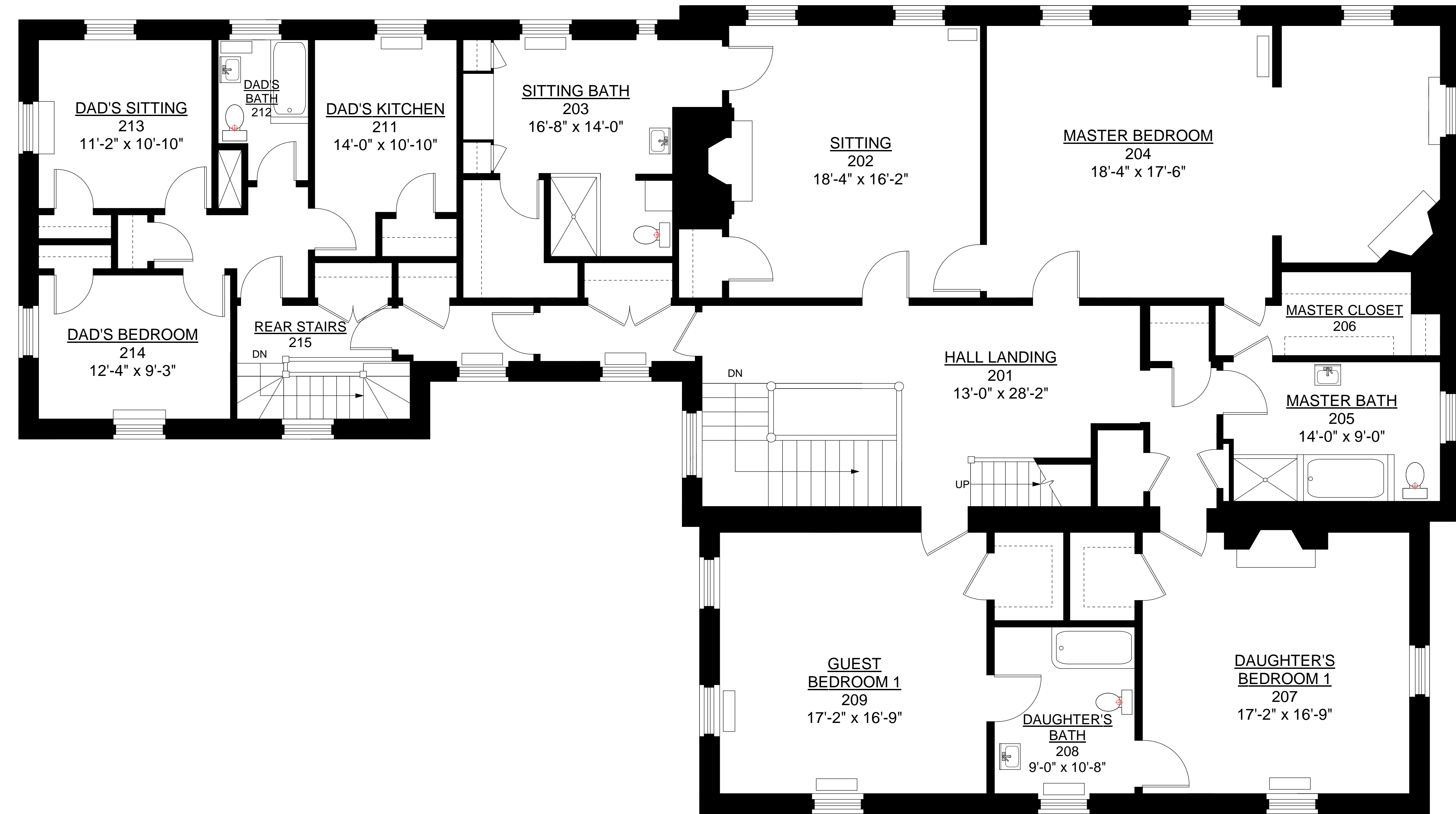
PROJECT:
 66 Cooke Street
 Providence, Rhode Island
 As-Builts

NUMBER:	DRAW:
DATE: January 24, 2009	CHECK:
SCALE: 1/4" = 1'-0"	

DRAWING TITLE:
 Existing Conditions
 First Floor Plan
 Ceiling Height - 10'-3"
 Gross Floor Area =
 3,620 SF

DRAWING NUMBER:

A-1



Scale 1/4" = 1'-0"

PROJECT:

 66 Cooke Street
 Providence, Rhode Island

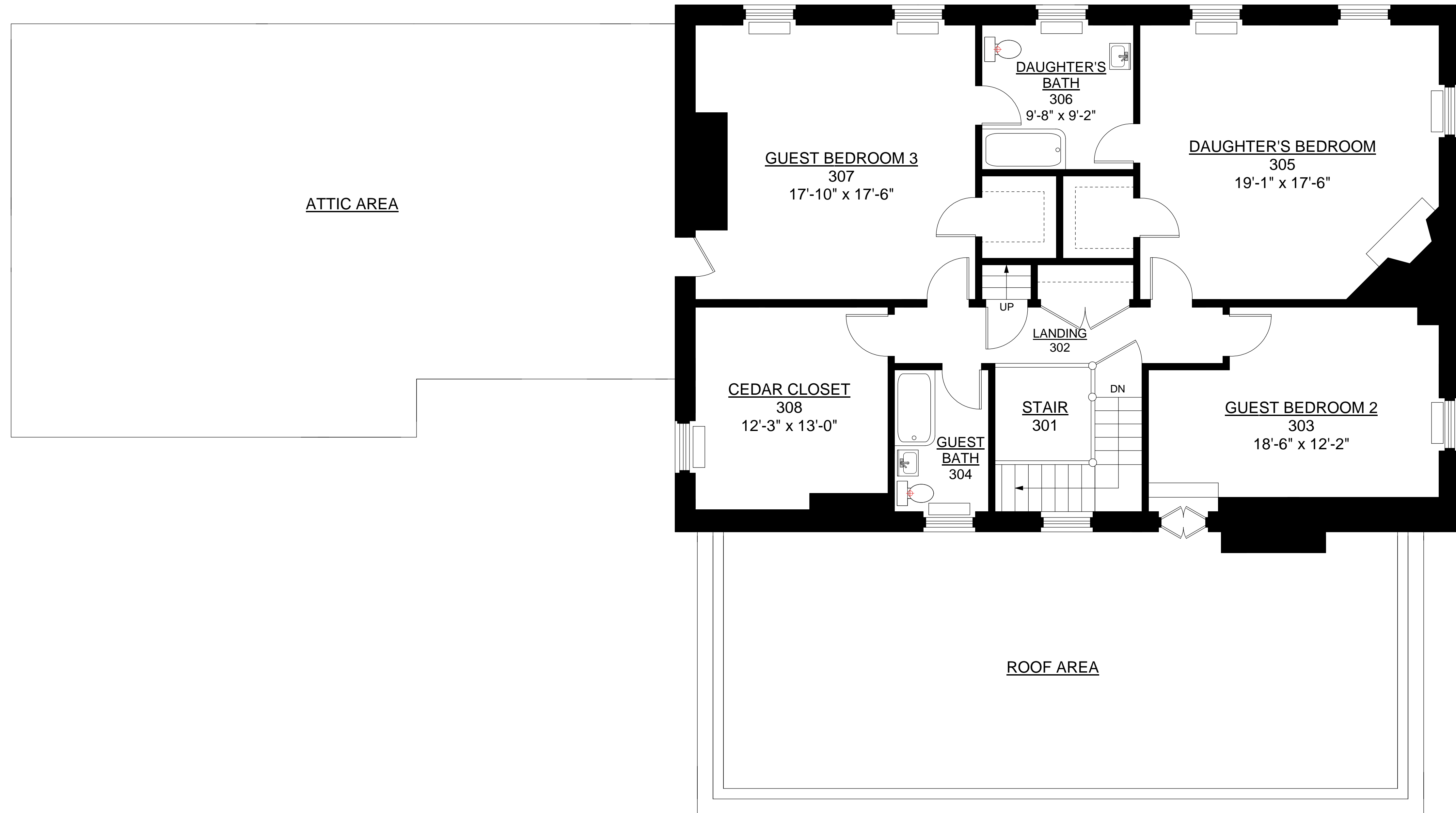
 As-Builts

NUMBER:	DRAW:
DATE: January 24, 2009	CHECK:
SCALE: 1/4" = 1'-0"	

DRAWING TITLE:
 Existing Conditions
 Second Floor Plan
 Ceiling Height - 8'-2"
 Gross Floor Area =
 3,620 SF

DRAWING NUMBER:

A-2



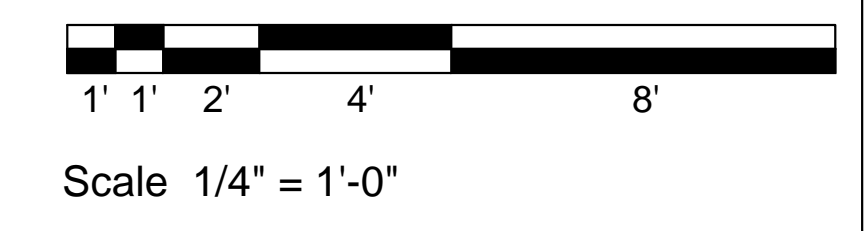
PROJECT:
 66 Cooke Street
 Providence, Rhode Island
 As-Builts

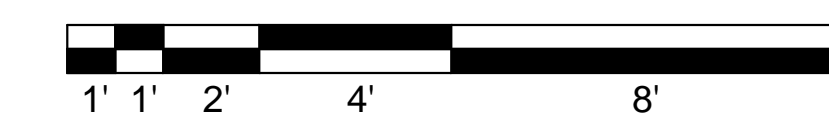
NUMBER:	DRAW:
DATE: January 24, 2009	CHECK:
SCALE: 1/4" = 1'-0"	

DRAWING TITLE:
 Existing Conditions
 Second Floor Plan
 Ceiling Height - 8'-1"
 Gross Floor Area =
 1,682 SF

DRAWING NUMBER:

A-3





Scale 1/4" = 1'-0"

New England Floor Plans
 Cumberland, Rhode Island
 Telephone - 800-328-0217
 www.nelfloorplans.com

PROJECT:

 66 Cooke Street
 Providence, Rhode Island

 As-Builts

NUMBER:	DRAW:
DATE: January 24, 2009	CHECK:
SCALE: 1/4" = 1'-0"	

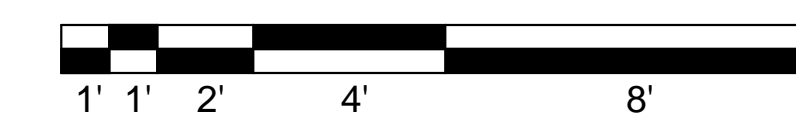
DRAWING TITLE:
 Existing Conditions
 Basement Floor Plan
 Ceiling Height - 7'-8"
 Gross Floor Area =
 3,620 SF

DRAWING NUMBER:

A-4



North Elevation



Scale 1/4" = 1'-0"

New England Floor Plans

Cumberland, Rhode Island
Telephone - 800-328-0217
www.nelfloorplans.com

PROJECT:

66 Cooke Street
Providence, Rhode Island

As-Builts

NUMBER: DRAW:

DATE: CHECK:
January 24, 2009

SCALE:
1/4" = 1'-0"

DRAWING TITLE:

Existing Conditions
Elevations

DRAWING NUMBER:

A-5



South Elevation



Scale 1/4" = 1'-0"

New England Floor Plans

Cumberland, Rhode Island
Telephone - 800-328-0217
www.nelfloorplans.com

PROJECT:

66 Cooke Street
Providence, Rhode Island

As-Builts

NUMBER: DRAW:

DATE: CHECK:
January 24, 2009

SCALE:
1/4" = 1'-0"

DRAWING TITLE:

Existing Conditions

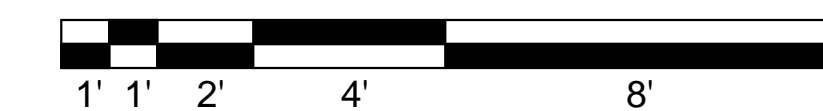
Elevations

DRAWING NUMBER:

A-6



East Elevation



Scale 1/4" = 1'-0"

New England Floor Plans

Cumberland, Rhode Island
Telephone - 800-328-0217
www.nelfloorplans.com

PROJECT:

66 Cooke Street
Providence, Rhode Island

As-Builts

NUMBER: DRAW:

DATE: CHECK:
January 24, 2009

SCALE:
1/4" = 1'-0"

DRAWING TITLE:

Existing Conditions

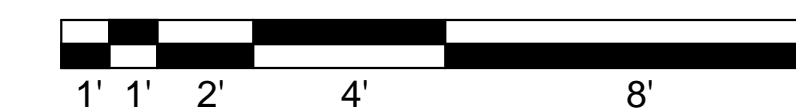
Elevations

DRAWING NUMBER:

A-7



West Elevation



Scale 1/4" = 1'-0"

New England Floor Plans
 Cumberland, Rhode Island
 Telephone - 800-328-0217
 www.nelfloorplans.com

PROJECT:

66 Cooke Street
 Providence, Rhode Island

As-Builts

NUMBER: DRAW:

DATE: CHECK:
 January 24, 2009

SCALE:
 1/4" = 1'-0"

DRAWING TITLE:

Existing Conditions
 Elevations

DRAWING NUMBER:

A-8