

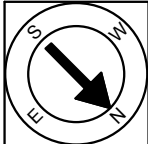
80 Fisher Road
Cumberland, RI 02864

First Floor Plan
Ceiling Height = 7'-10"



Scale 1/8" = 1'-0"

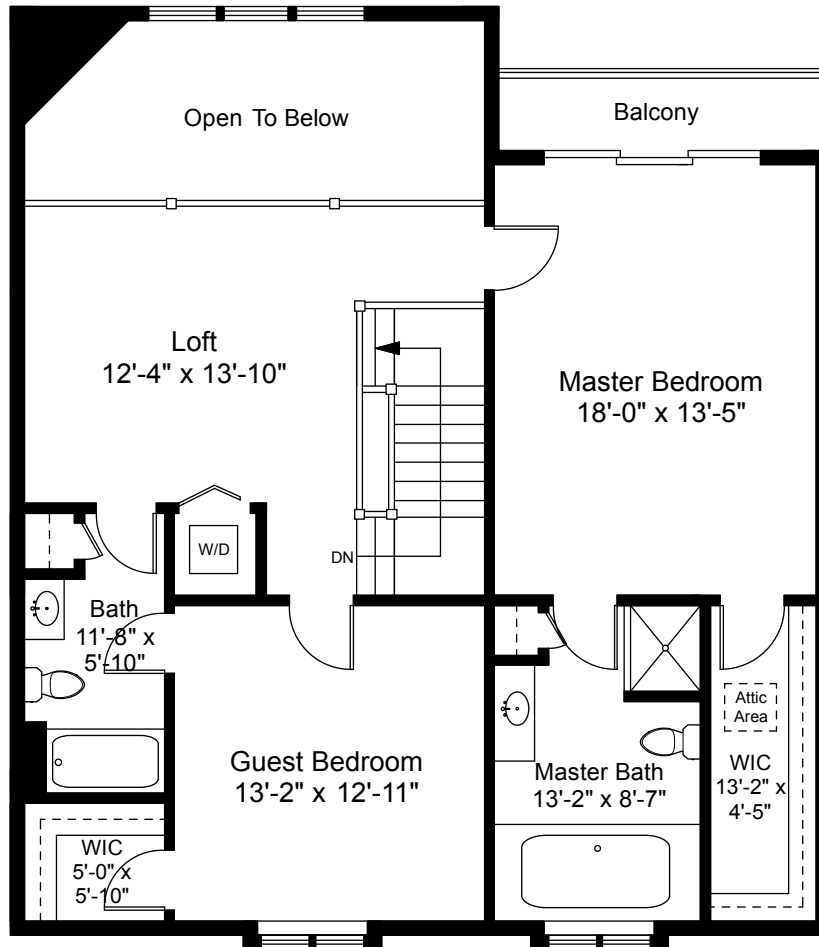
1



Completed: December, 2014

Note: Dimensions are not guaranteed and are provided for informational purposes only.

NEW ENGLAND
FLOOR PLANS
& PHOTOGRAPHY
(800) 328-0217



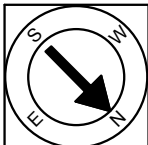
Second Floor Plan
 Ceiling Height = 7'-6"

80 Fisher Road
 Cumberland, RI 02864



Scale 1/8" = 1'-0"

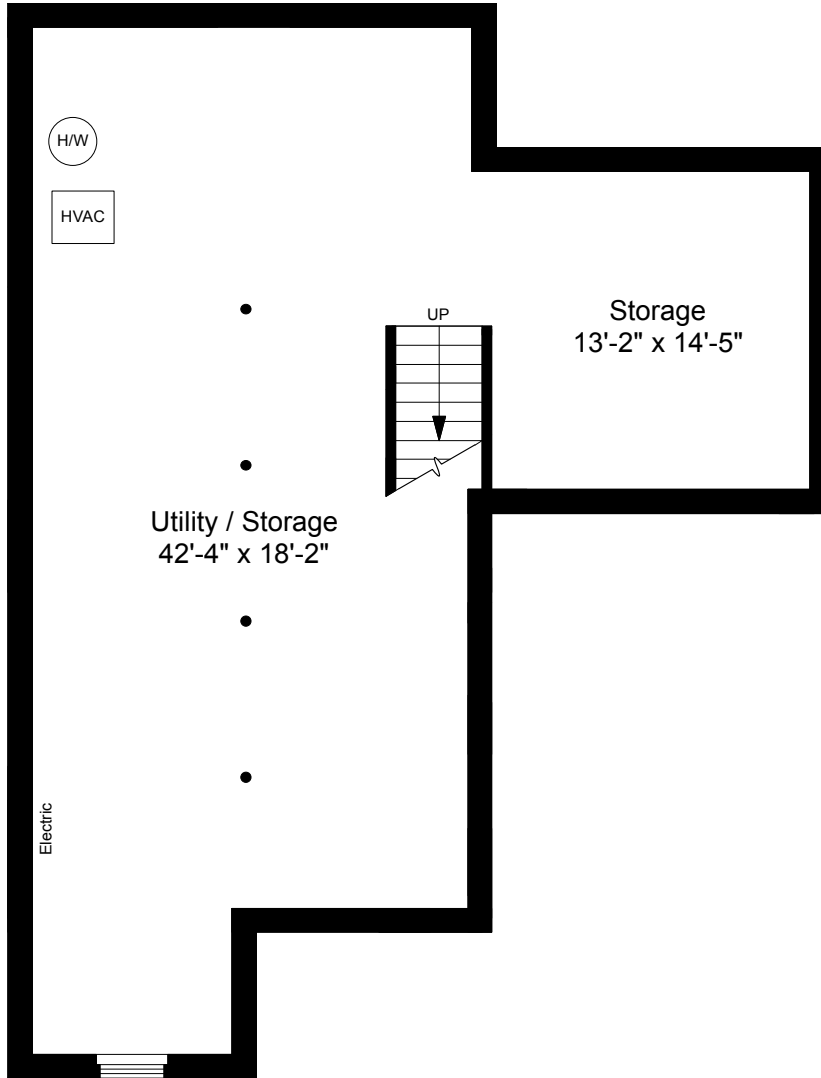
2



Completed: December, 2014

Note: Dimensions are not guaranteed and are provided for informational purposes only.

NEW ENGLAND
 FLOOR PLANS
 & PHOTOGRAPHY
 (800) 328-0217



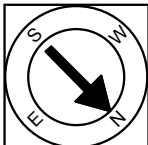
Basement Plan
Ceiling Height = 7'-6"

80 Fisher Road
Cumberland, RI 02864



Scale 1/8" = 1'-0"

3



Completed: December, 2014

Note: Dimensions are not guaranteed and are provided for informational purposes only.

NEW ENGLAND
FLOOR PLANS
& PHOTOGRAPHY
(800) 328-0217