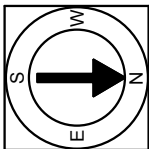


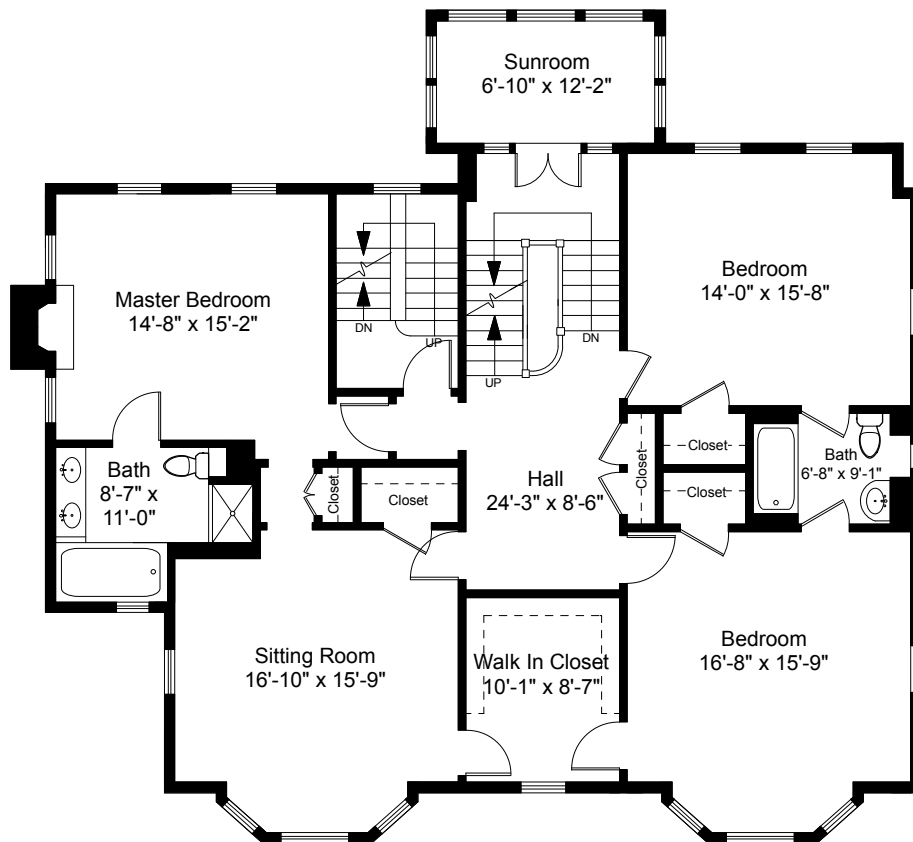
1



Completed: May 2015

Note: Dimensions are not guaranteed and are provided for informational purposes only.

NEW ENGLAND
FLOOR PLANS
& PHOTOGRAPHY
(800) 328-0217



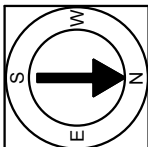
Second Floor Plan
Ceiling Height = 8'-4"

350 Wayland Avenue
Providence, RI 02906



Scale

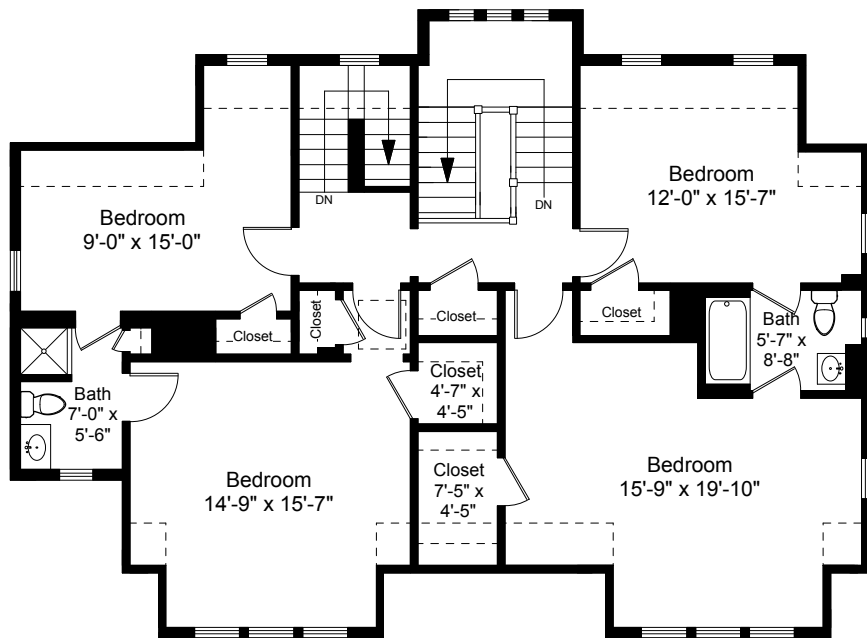
2



Completed: May 2015

Note: Dimensions are not guaranteed and are provided for informational purposes only.

NEW ENGLAND
FLOOR PLANS
& PHOTOGRAPHY
(800) 328-0217



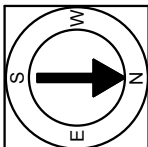
Third Floor Plan
Ceiling Height = 8'-0"

350 Wayland Avenue
Providence, RI 02906



Scale

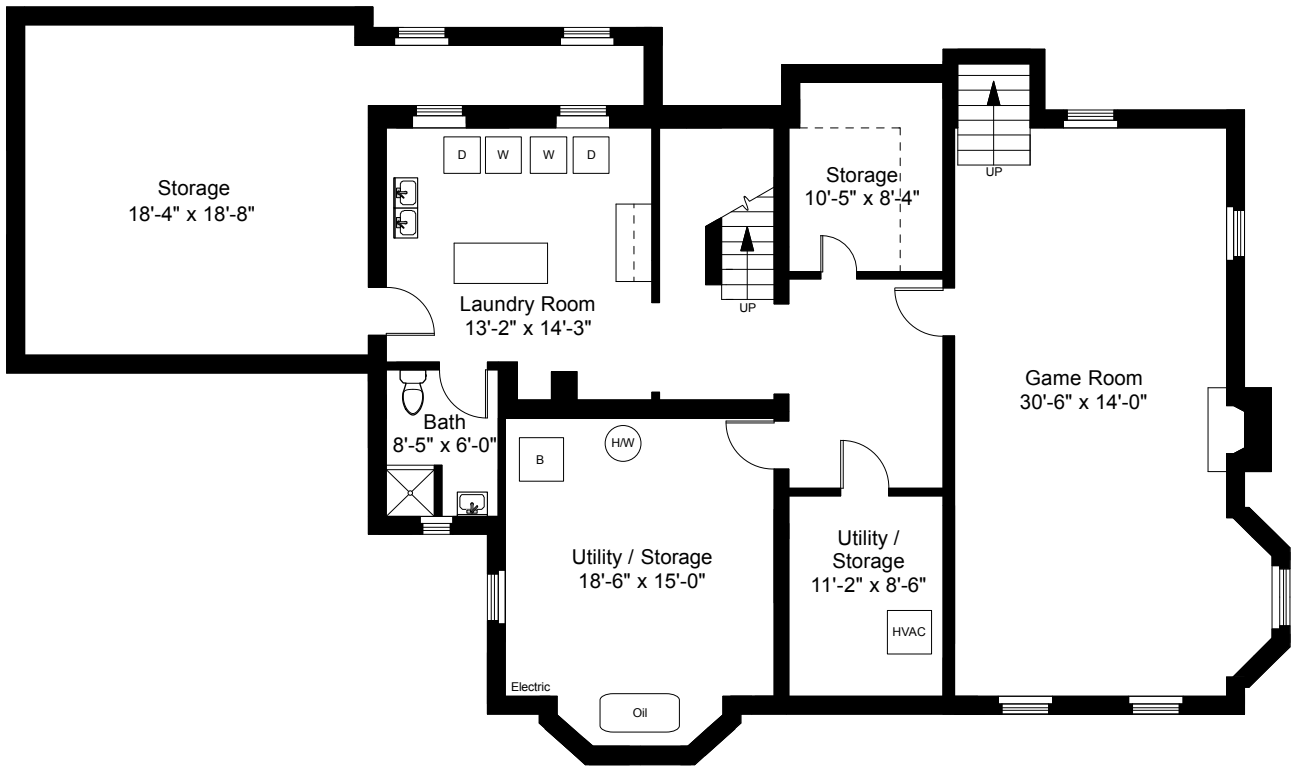
3



Completed: May 2015

Note: Dimensions are not guaranteed and are provided for informational purposes only.

NEW ENGLAND
FLOOR PLANS
& PHOTOGRAPHY
(800) 328-0217



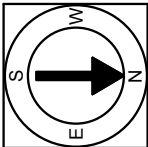
Lower Level Plan
Ceiling Height = 7'-10"

350 Wayland Avenue
Providence, RI 02906



Scale

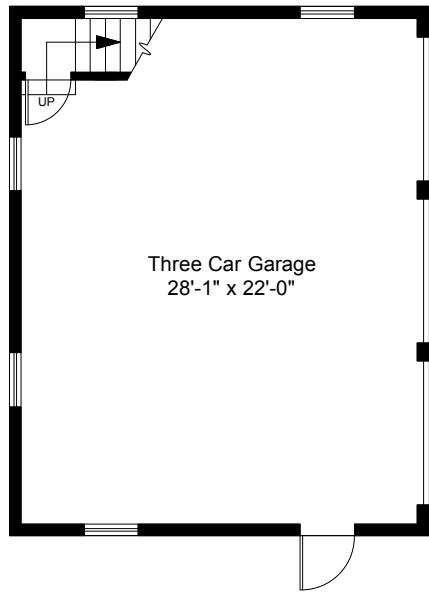
4



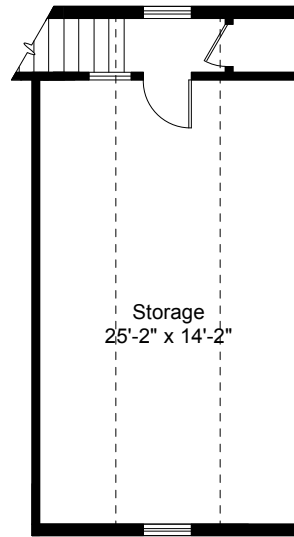
Completed: May 2015

Note: Dimensions are not guaranteed and are provided for informational purposes only.

NEW ENGLAND
FLOOR PLANS
& PHOTOGRAPHY
(800) 328-0217



Garage - First Floor Plan
Ceiling Height = 9'-4"



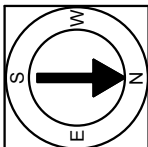
Garage - Second Floor Plan
Ceiling Height = 7'-10"

350 Wayland Avenue
Providence, RI 02906



Scale

5



Completed: May 2015

Note: Dimensions are not guaranteed and are provided for informational purposes only.

NEW ENGLAND
FLOOR PLANS
& PHOTOGRAPHY
(800) 328-0217